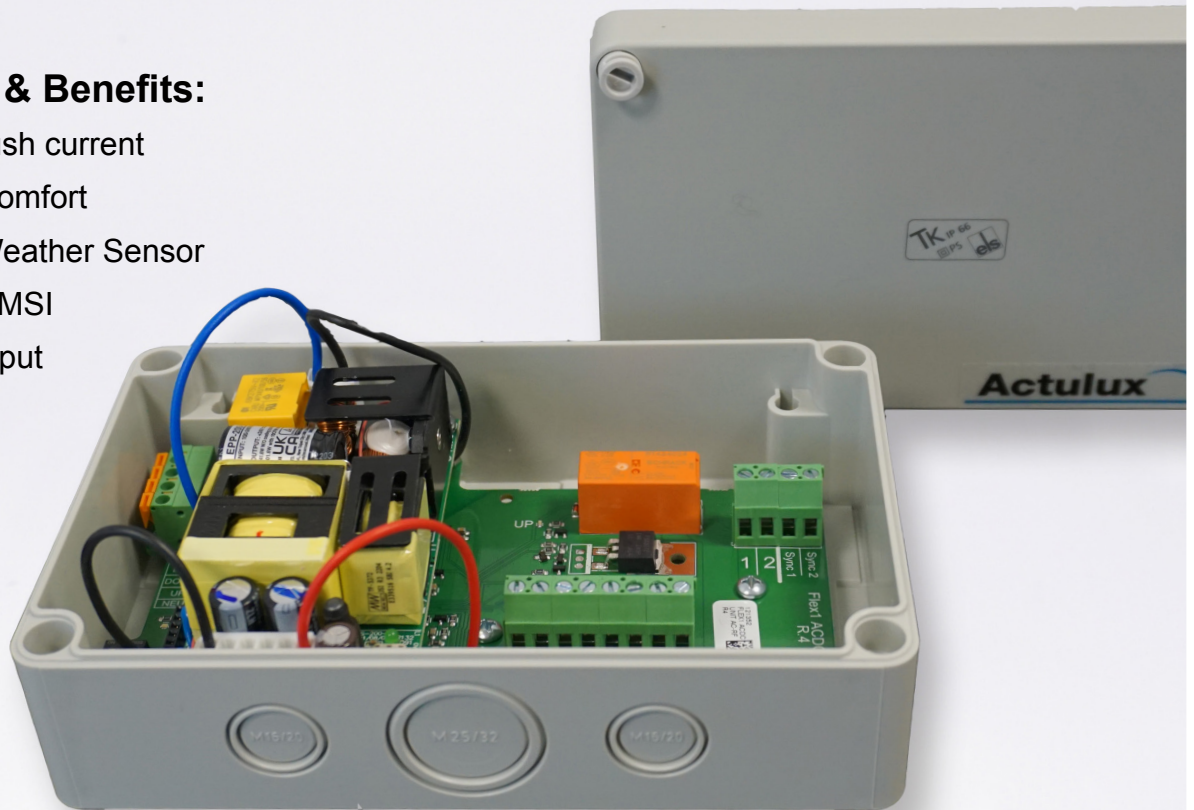


## Special Features & Benefits:

- Low inrush current
- Wired Comfort
- Wired Weather Sensor
- Wired CMSI
- Alarm input



## Flex1 ACDC

AC Power Supply for LIP or Chain Motor - 24/48V



*Flex1 ACDC as supply for built-in overload protector.  
ex. LIP7 OC #121308  
Box size (LxWxH): 180 x 110 x 63 mm*



*Flex1 ACDC as supply for motors with own overload protector.  
(Chain & Rack Drives)  
Box size (LxWxH): 180 x 110 x 63 mm*

# Flex1 ACDC - 110VAC 24VDC / 230VAC 24/48VDC

## POWER SUPPLY FOR LIP OR CHAIN MOTOR

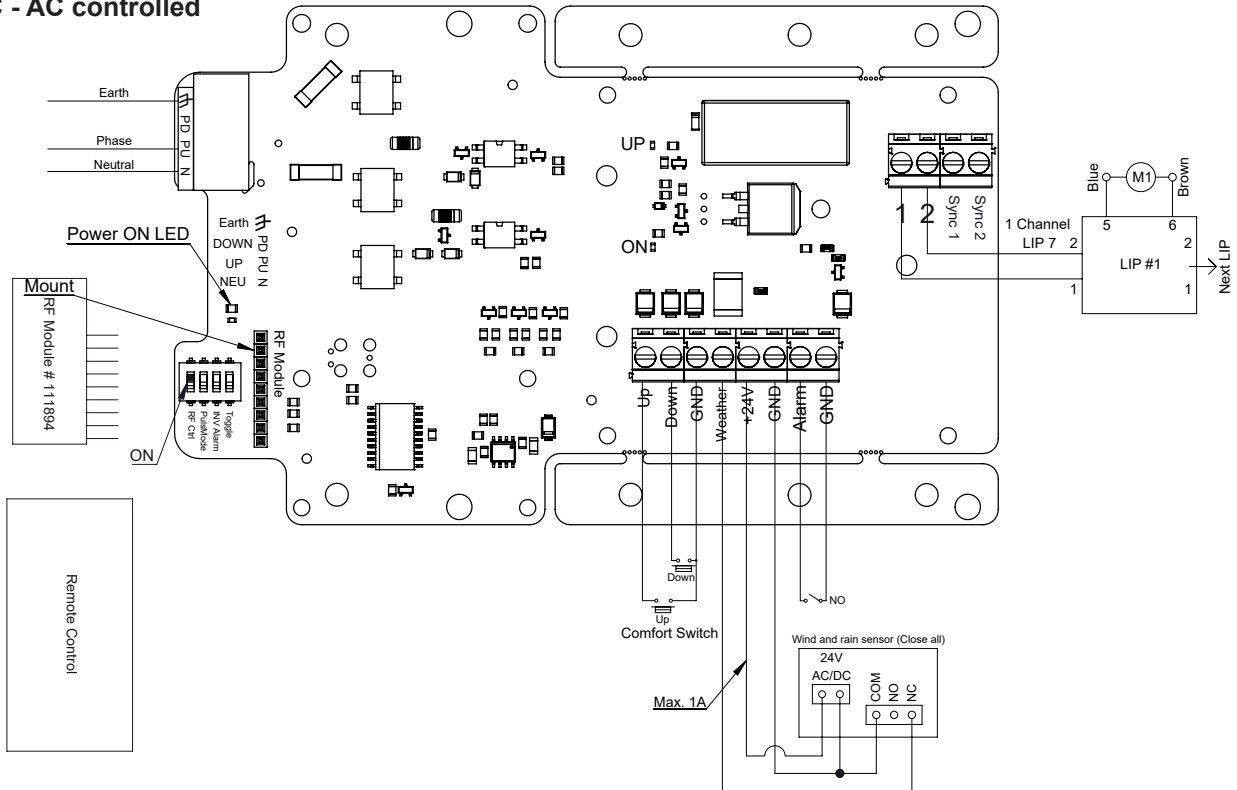
The Flex1 ACDC consists of an electrical high performance 110VAC 24VDC or 230VAC 24/48VDC Switch Mode Power Supply.

It is possible to mount LIP5, LIP6 or LIP7 from the traditional Actulux Opening System enabling them to be supplied by 110/230V.

As additional it can also be used as a 230VAC supply for ex. 24/48VDC HCV Chain Drives.

In both options it is possible to configure the Flex1 ACDC with a RF-receiver PCB #111894 to make remote control possible for comfort ventilation use and for the Actulux Weather Sensors.

### Flex1 ACDC - AC controlled



## FEATURES

Meets requirements: EN12101-2 Annex G

Can be used with all kinds of 24VDC motors with own overload protection

Max. operation time 120 sec. Duty cycle 10% 2 min. / 18 min.

IP rating: IP66

Operating temperature: -15°C - +40°C

Wire range: 0,2- 2mm<sup>2</sup>

Product no.	Output	Power supply	Inrush Current (cold start)	Leakage Current
#121370 3A / 65W	24VDC	230VAC - max. 1,5A	5A/230VAC	<2mA/240VAC
#121348 5A / 120W				<2mA/240VAC
#121360 8A / 200W				<0.75mA/240VAC
#121230 6A / 300W	48VDC	230VAC - max. 2,5A		<500 µA/264VAC
#121283 3A / 65W	24VDC	110VAC - max. 1,8A	5A/110VAC	<2mA/240VAC
#121263 8A / 200W				<0.75mA/240VAC

Option: RF control by use of #111894