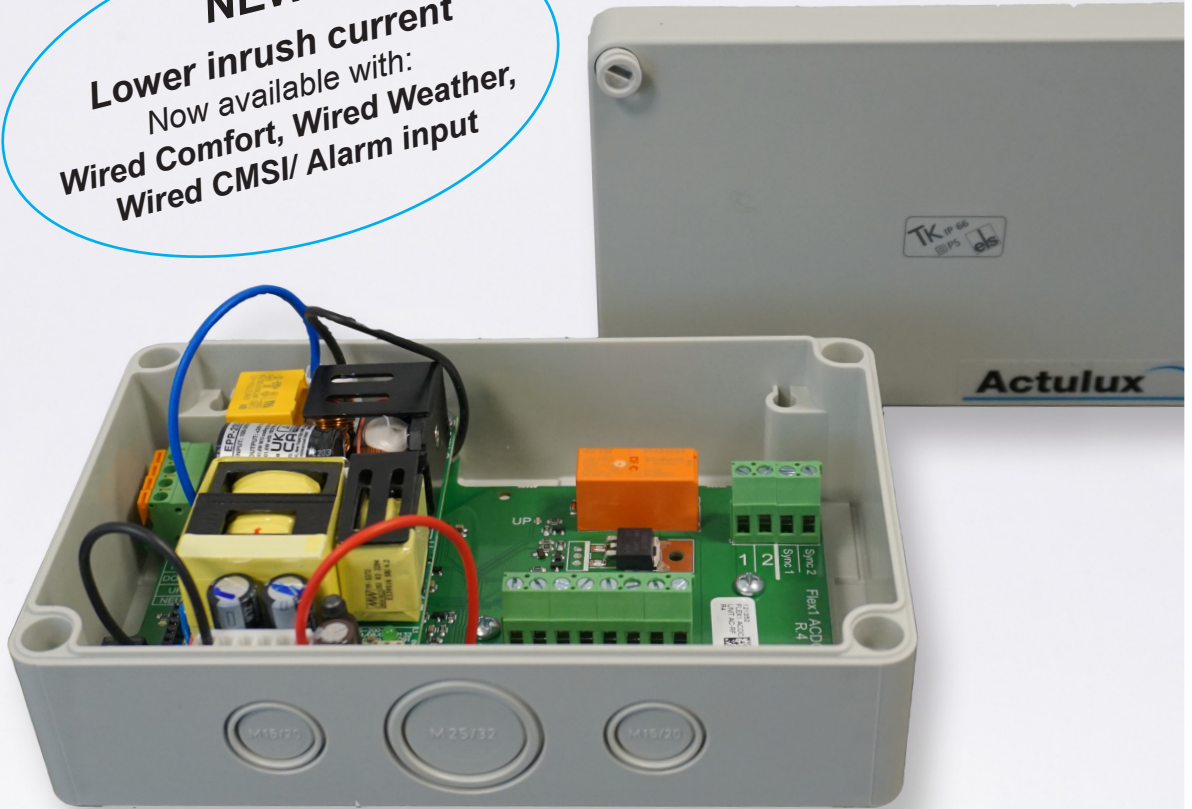


NEW
Lower inrush current
Now available with:
Wired Comfort, Wired Weather,
Wired CMSI/ Alarm input



Flex1 ACDC

AC Power Supply for LIP or Chain Motor



*Flex1 ACDC as supply for built-in overload protector.
ex. LIP7 OC #121308
Box size (LxWxH): 180 x 110 x 63 mm*



*Flex1 ACDC as supply for motors with own overload protector.
(Chain & Rack Drives)
Box size (LxWxH): 180 x 110 x 63 mm*

Flex1 ACDC - 230VAC

POWER SUPPLY FOR LIP OR CHAIN MOTOR

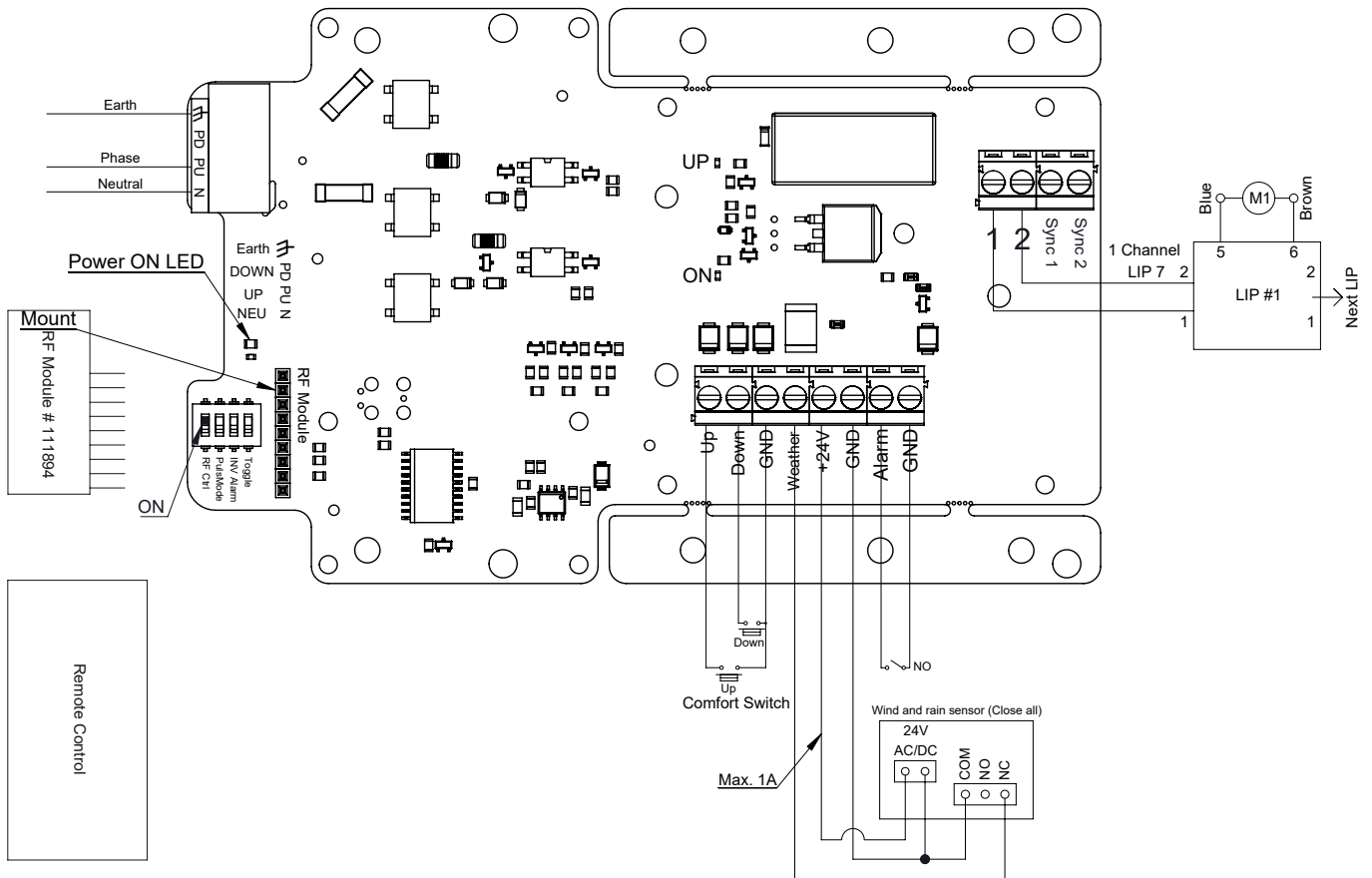
The Flex1 ACDC consists of an electrical high performance 230VAC / 24VDC Switch Mode Power Supply.

It is possible to mount LIP5, LIP6 or LIP7 from the traditional Actulux Opening System enabling them to be supplied by 230V.

As additional it can also be used as a 230VAC supply for ex. 24VDC HCV Chain Drives.

In both options it is possible to configure the Flex1 ACDC with a RF-receiver PCB #111894 to make remote control possible for comfort ventilation use and for the Actulux Weather Sensors.

Flex1 ACDC - AC controlled



FEATURES

Power supply: 230VAC - max. 1.5A

Output: 24VDC

Meets requirements: EN12101-2 Annex G

Can be used with all kinds of 24VDC motors with own overload protection

Max. operation time 120 sec. Duty cycle 10% 2 min. / 18 min.

IP rating: IP66

Operating temperature: -15°C - +40°C

Wire range: 0,2- 2mm²

Product no.: #121370 3A / 65W

Product no.: #121380 4A / 80W

Product no.: #121390 6A / 150W

Product no.: #121360 8A / 200W

Option: RF control by use of #111894

Inrush Current (cold start)

Leakage Current

5A/230VAC

<2mA/240VAC

<2mA/240VAC

<2mA/240VAC

<0.75mA/240VAC