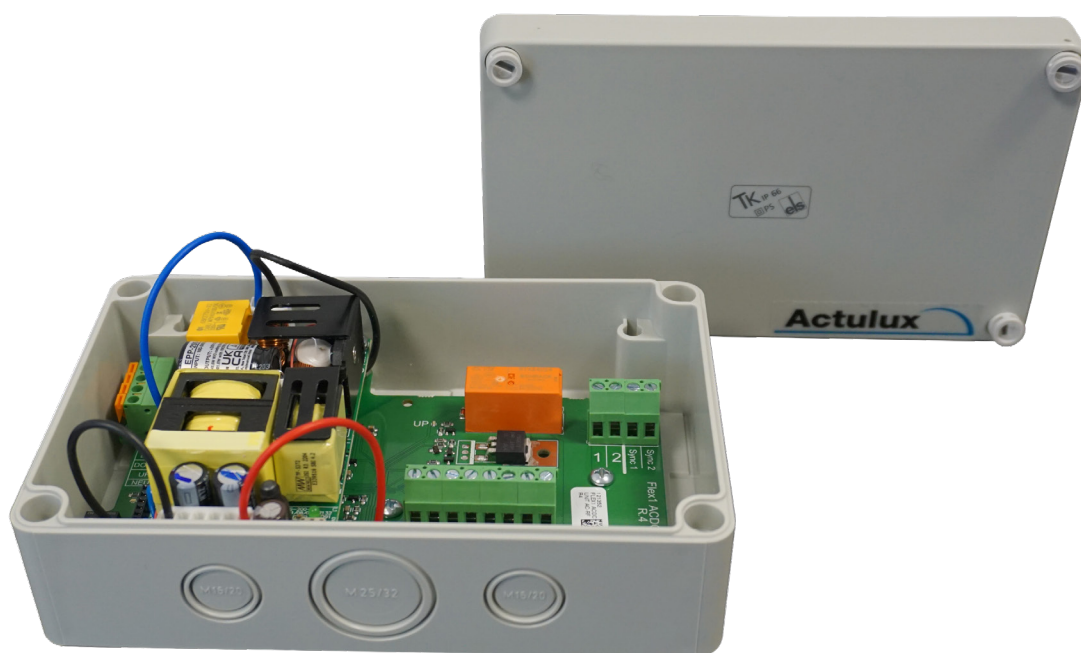


# Connection Instruction for Flex1 ACDC



- Wind & Rain Sensors
- Remote Control
- Wired Control
- Chain Drive
  - LIP6
  - LIP7

**Manufacturer:**

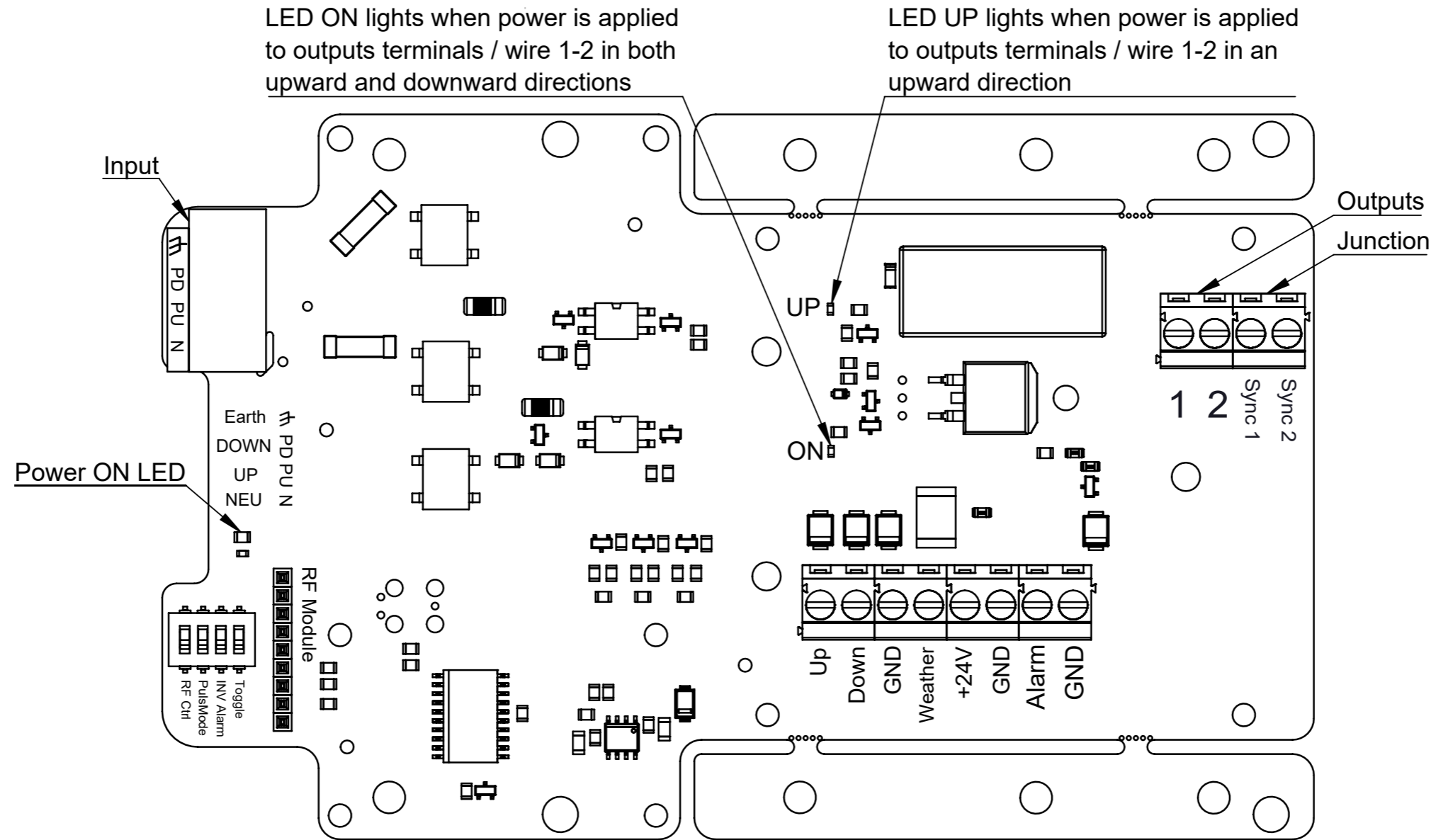
Actulux A/S  
Porsborgparken 35

9530 Stoevring  
Denmark

Tel.: +45 98 57 40 90  
e-mail: [info@actulux.com](mailto:info@actulux.com)

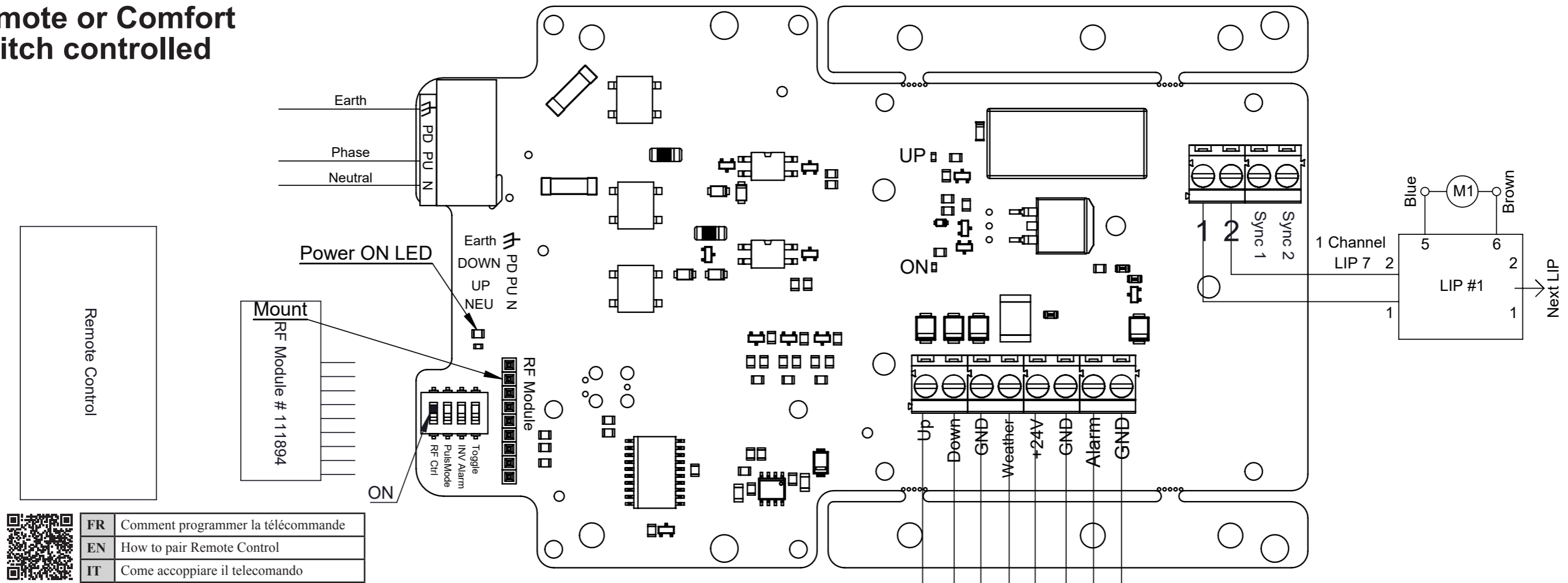
[www.actulux.com](http://www.actulux.com)

# Flex1 ACDC



Descriptif (FR)	Description (EN)	Descrizione (IT)
Entrées	Input	Ingresso
Sortie	Outputs	Uscite
Raccordement	Junction	Collegamenti
DIP 1 "ON" = Télécommande ou Commande aération	DIP 1 "ON" = Remote or Comfort Switch controlled	DIP 1 "ON" = Controllo remoto o pulsante comfort
DIP 1 "OFF" = Pilotage via 230V	DIP 1 "OFF" = AC Supply Controlled	DIP 1 "OFF" = Alimentazione CA controllata
LED UP est allumée lorsqu'il y a une tension sur les terminaux 1-2 dans le sens de ouverture	LED UP lights when there is power on outputs terminals / wire 1-2 in an upward direction	LED UP si illumina quando c'è alimentazione nei terminali 1-2 in direzione apre
LED ON est allumée lorsqu'il y a une tension sur les terminaux 1-2 dans le sens de la fermeture	LED ON lights when there is power on outputs terminals / wire 1-2 in both up- and downward direction	LED ON si illumina quando c'è alimentazione nei terminali 1-2 in entrambe le direzioni Apre/chiude

# Remote or Comfort Switch controlled

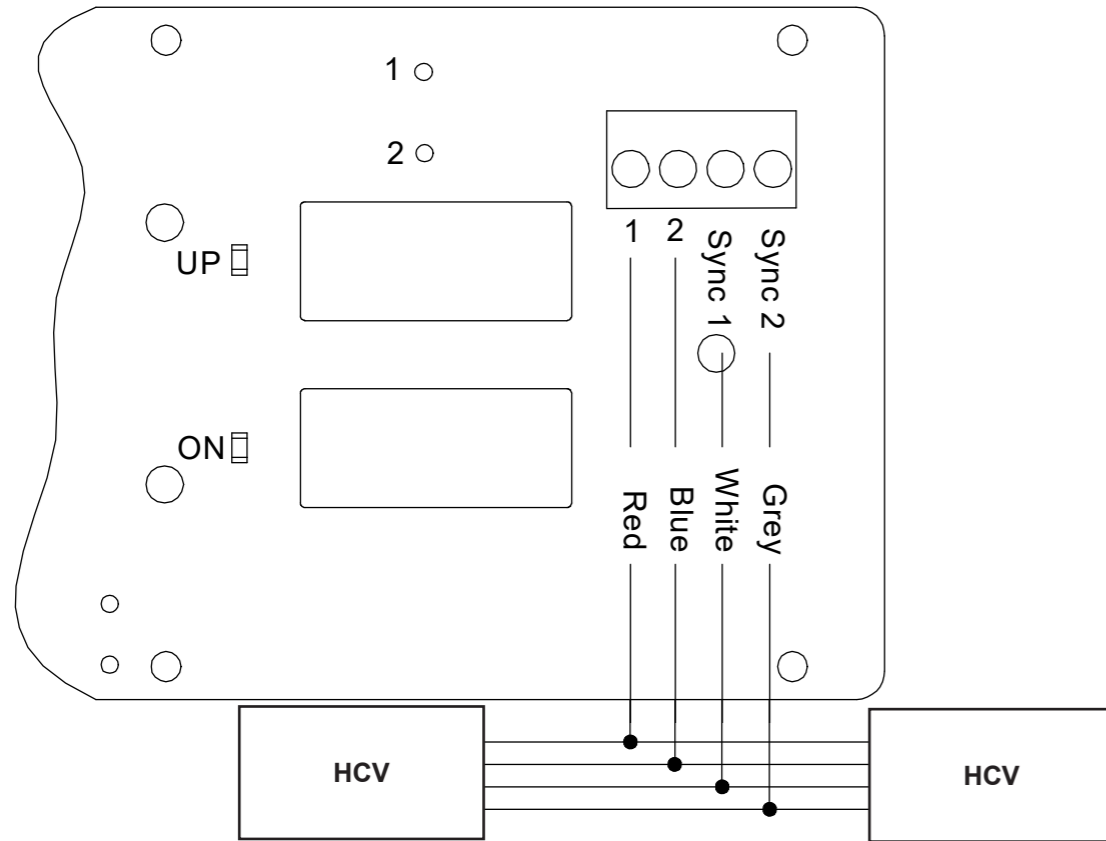


QR Code	FR	Comment programmer la télécommande
	EN	How to pair Remote Control
	IT	Come accoppiare il telecomando

	Descriptif (FR)	Description (EN)	Descrizione (IT)	
RF CTRL (DIP 1)	ON	Télécommande ou commande aération	Remote or Comfort Switch controlled	Controllo remoto o pulsante comfort
	OFF	Pilotage par secteur 230V	AC Supply Controlled	CA alimentazione controllata
PulsMode (DIP 2)	ON	Il est possible d'appuyer 3 fois sur le bouton "ouverture", chaque impulsion déclenchant une phase d'ouverture de 6 secondes.  Un appui prolongé sur « ouverture » équivaut à 3 x 6 secondes donc 18 secondes.  Une impulsion ou maintenu sur "fermeture" ferme complètement l'appareil- Le temps de fermeture est de 36 secondes.	It is possible to press the "up" button 3 times, which each gives 6 seconds of opening time - after that nothing happens - Continuous "up" signal gives 3x6 sec.=18 sec.  - One press on "down" closes the actuator completely for a period which is 18 sec. longer than the complete opening time  - In order to avoid "actuator pumping" max. 3 successive closing attempts will be allowed.	È possibile premere il pulsante "apre" 3 volte, ognuna delle quali dà 6 secondi di tempo di apertura - dopodiché non succede nulla - Il segnale continuo "apre" dà 3x6 sec.=18 sec.  - Una pressione su "chiude" chiude completamente l'attuatore per un periodo che è di 18 sec. più lungo dell'input di apertura completo  - Per evitare il "pompaggio dell'attuatore" max. Saranno consentiti 3 successivi tentativi di chiusura.
	OFF	Une action maintenue sur le bouton poussoir « ouverture » ou « fermeture » entraîne un ordre à la sortie de télécommande	Constant mode active. As long as "up" or "down" signal are given, the actuators are running	Modalità "continua" attiva. Finché viene fornito il segnale "apre" o "chiude", gli attuatori sono in funzione
INV Alarm (DIP 3)	ON	Alarme lorsqu'il y a rupture de tension	Alarm when no voltage	Allarme quando manca alimentazione
	OFF	Alarme en mode émission	Alarm when voltage applied	Allarme quando viene data alimentazione
Toggle (DIP 4)	ON	Basculer la sortie	Toggle output	Attiva/disattiva l'uscita
	OFF	Fonction normale	Normal function	Funzione normale

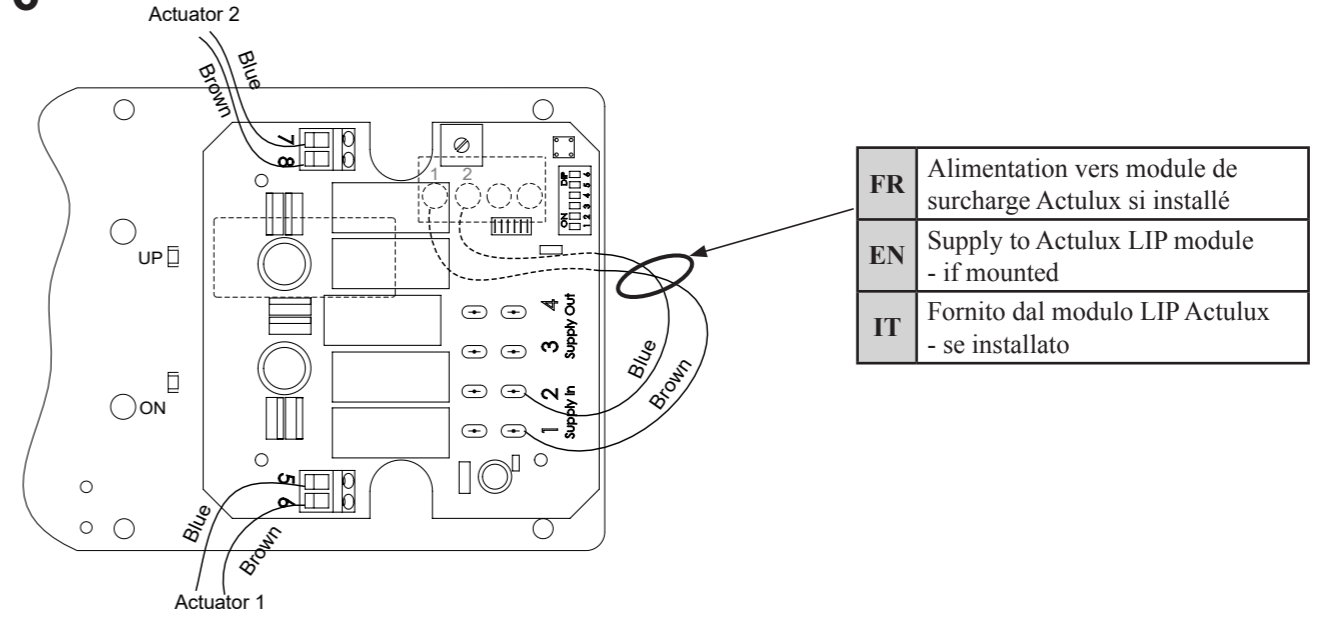
Descriptif (FR)	Description (EN)	Descrizione (IT)
Terre	Earth	Terra
Phase	Phase	Fase
Neutre	Neutral	Neutro
Fermeture	Down	Chiude
Ouverture	Up	Apre
Bleu	Blue	Blu
Marron	Brown	Marrone
Télécommande	Remote control	Controllo remoto
Sonde pluie et vent	Wind- and Rain Sensor	Sensore vento/pioggia
Commande aération	Comfort Switch	Pulsante comfort
Montage	Mounting	Installazione

# Chain Drive



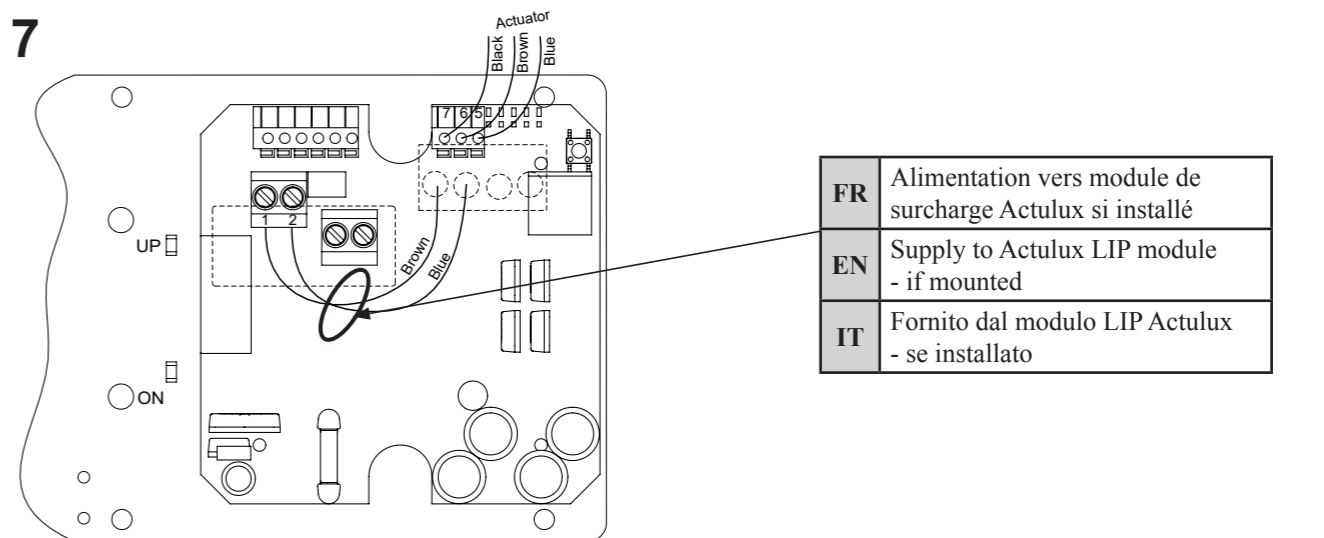
Descriptif (FR)	Description (EN)	Descrizione (IT)
Boîtiers à chaîne	Chain Drive	Azionamenti a catena
Bleu	Blue	Blu
Marron	Brown	Marrone
Gris	Grey	Grigio
Blanc	White	Bianco
Rouge	Red	Rosso
Ouverture	Up	Aprire

# LIP 6



Descriptif (FR)	Description (EN)	Descrizione (IT)
Bleu	Blue	Blu
Marron	Brown	Marrone
Alimentation	Supply	Alimentazione

# LIP 7



Descriptif (FR)	Description (EN)	Descrizione (IT)
Bleu	Blue	Blu
Marron	Brown	Marrone
Noir	Black	Nero
OFF = Aucune résistance 27kΩ pour surveillance de ligne	OFF = No 27kΩ for line detection	OFF = Nessuna resistenza 27kΩ per monitoraggio linea
ON = Résistance de 27kΩ pour la surveillance de ligne	ON = 27kΩ for line detection at supply entrance	ON = Resistenza da 27kΩ per monitoraggio linea con alimentazione
Fermeture	Down	Chiudere
Ouverture	Up	Aprire

Caractéristiques Techniques		FR
3A/65W 4A/80W 6A/150W 8A/200W	Alimentation: 230VAC – max 1,5A	Sortie: 24VDC
6A/300W	Alimentation: 230VAC – max 2,5A	Sortie: 48VDC
3A/65W 8A/200W	Alimentation: 110VAC – max 1,8A	Sortie: 24VDC
Max. temps de fonctionnement 120 sec. Cycle de service 10% 2 min. /18 min.		
Indice de protection: IP66		Température d'utilisation: -15°C - +40°C
Dimensions: (L x B x H) 180 x 110 x 62mm		Poids: 580g
Conformité:		EN12101-2 Annex G
Directive Basse Tension:		2014/35/EU EN 61558-1:2006 (2nd edition), EN 61558-2-6, EN 61558-2-16 and EN 60335-1:2012 (4th edition)
Directive Basse Tension:		(2014/30/EU), EN50130-4:2011

Technical specifications		EN
3A/65W 4A/80W 6A/150W 8A/200W	Power supply: 230VAC – max 1.5A	Output: 24VDC
6A/300W	Power supply: 230VAC – max 2.5A	Output: 48VDC
3A/65W 8A/200W	Power supply: 110VAC – max 1.8A	Output: 24VDC
Max. operation time 120 sec. Duty cycle 10% 2 min. /18 min.		
IP class: IP66		Operating temperature: -15°C - +40°C
Box size: (L x B x H) 180 x 110 x 62mm		Weight: 580g
Meets requirements:		EN12101-2 Annex G
Low Voltage Directive:		2014/35/EU EN 61558-1:2006 (2nd edition), EN 61558-2-6, EN 61558-2-16 and EN 60335-1:2012 (4th edition)
EMC Directive:		(2014/30/EU), EN50130-4:2011

Caratteristiche tecniche		IT
3A/65W 4A/80W 6A/150W 8A/200W	Alimentazione: 230VAC - max. 1,5A	Tensione di uscita: 24VDC
6A/300W	Alimentazione: 230VAC - max. 2,5A	Tensione di uscita: 48VDC
3A/65W 8A/200W	Alimentazione: 110VAC - max. 1,8A	Tensione di uscita: 24VDC
Massimo tempo di utilizzo: 120 s, Utilizzo: 10% 2 min. /18 min.		
Classe di protezione: IP66		Temperature di utilizzo: -15°C - +40°C
Dimensioni scatola: (L x L x H): 180 x 110 x 62mm		Peso: 580g
Conforme a:		EN12101-2 allegato G
Normative bassa tensione:		2014/35/EU EN 61558-1:2006 (2nd edition), EN 61558-2-6, EN 61558-2-16 and EN 60335-1:2012 (4th edition)
Direttiva EMC:		(2014/30/EU), EN50130-4:2011

Article / Product no. / Prodotto n.	Courant d'appel / Inrush Current (cold start) / Corrente di spunto	Courant de fuite / Leakage Current / Dispersione
#121370 3A/65W	5A/230VAC	<2mA/240VAC
#121380 4A/80W		<2mA/240VAC
#121390 6A/150W		<2mA/240VAC
#121360 8A/200W		<0.75mA/240VAC
#121230 6A/300W		<500 µA/264VAC
#121283 3A/65W	5A/110VAC	<2mA/240VAC
#121263 8A/200W		<0.75mA/240VAC