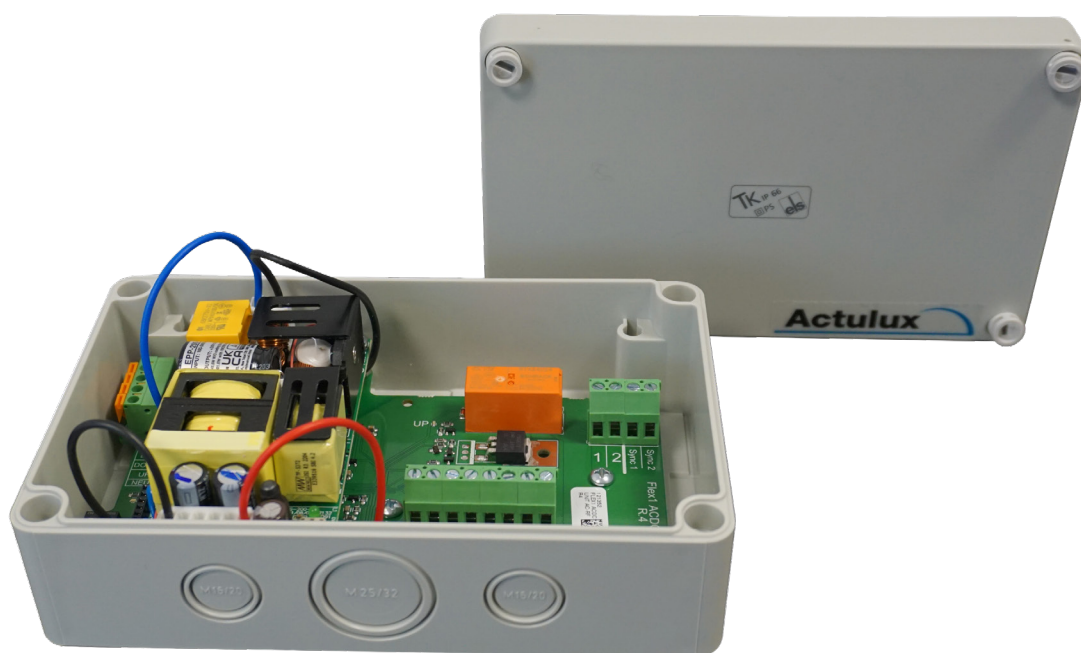


Connection Instruction for Flex1 ACDC



- Wind & Rain Sensors
- Remote Control
- Wired Control
 - LIP6
 - LIP7

Manufacturer:

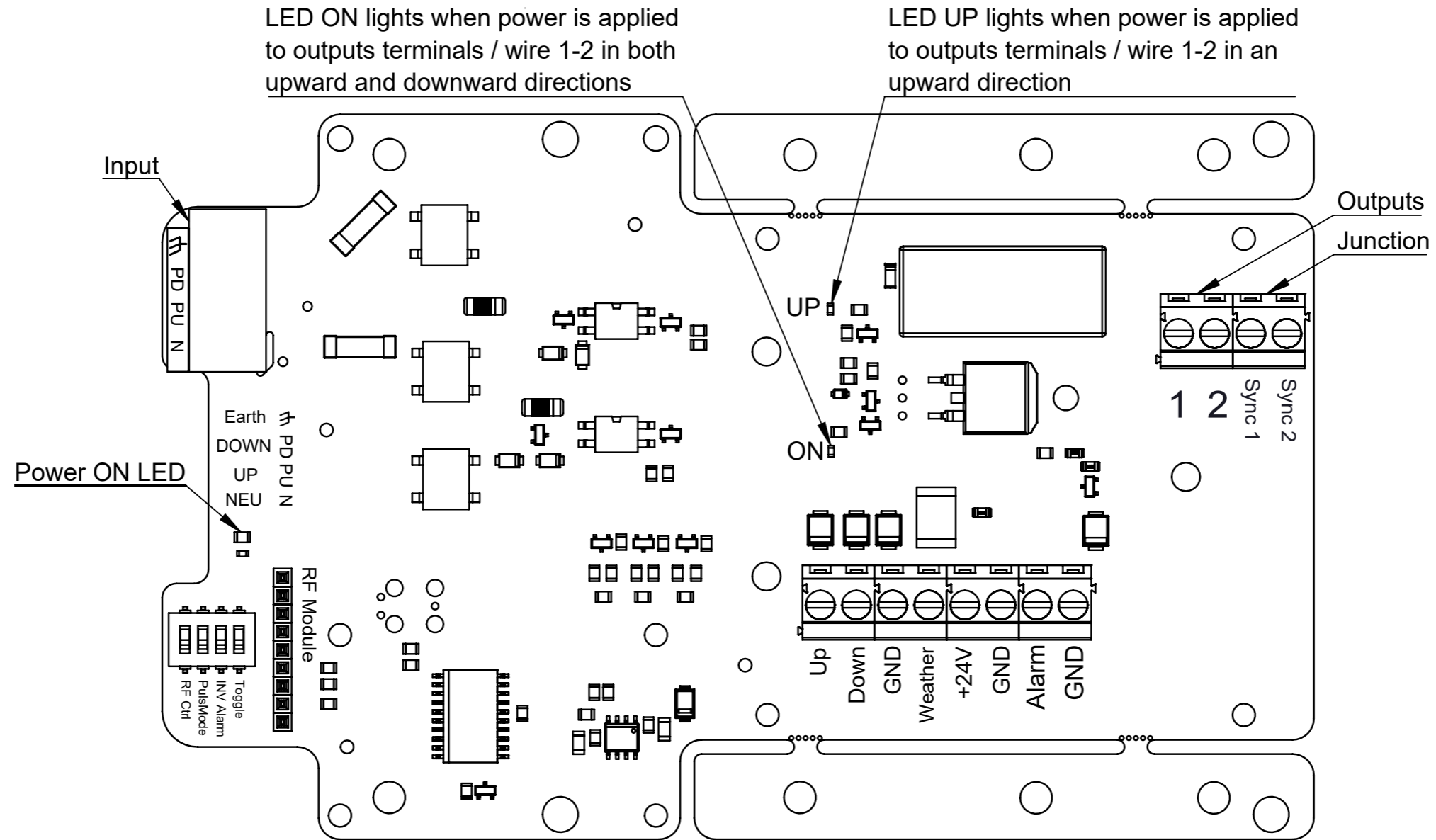
Actulux A/S
Porsborgparken 35

9530 Stoevring
Denmark

Tel.: +45 98 57 40 90
e-mail: info@actulux.com

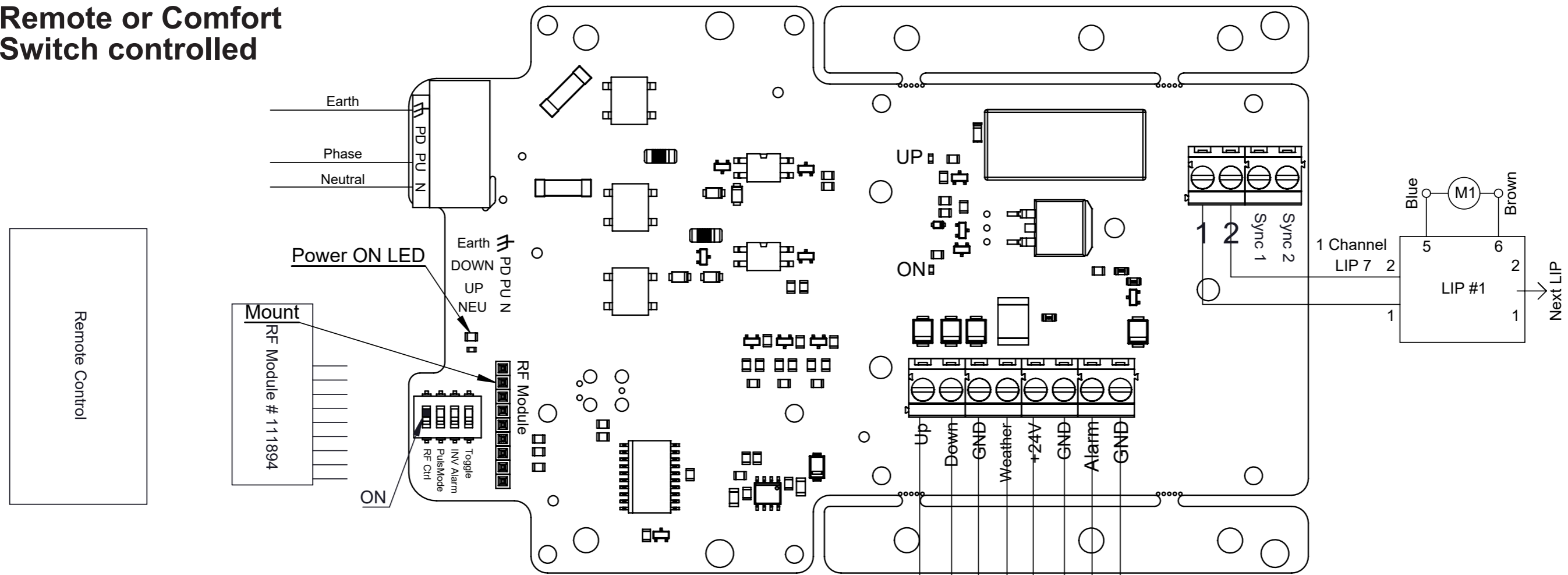
www.actulux.com

Flex1 ACDC



Descriptif (FR)	Description (EN)	Descrizione (IT)
Entrées	Input	Ingresso
Sortie	Outputs	Uscite
Raccordement	Junction	Collegamenti
DIP 1 "ON" = Télécommande ou Commande aération	DIP 1 "ON" = Remote or Comfort Switch controlled	DIP 1 "ON" = Controllo remoto o pulsante comfort
DIP 1 "OFF" = Pilotage via 230V	DIP 1 "OFF" = AC Supply Controlled	DIP 1 "OFF" = Alimentazione CA controllata
LED UP est allumée lorsqu'il y a une tension sur les terminaux 1-2 dans le sens de ouverture	LED UP lights when there is power on outputs terminals / wire 1-2 in an upward direction	LED UP si illumina quando c'è alimentazione nei terminali 1-2 in direzione apre
LED ON est allumée lorsqu'il y a une tension sur les terminaux 1-2 dans le sens de la fermeture	LED ON lights when there is power on outputs terminals / wire 1-2 in both up- and downward direction	LED ON si illumina quando c'è alimentazione nei terminali 1-2 in entrambe le direzioni Apre/chiude

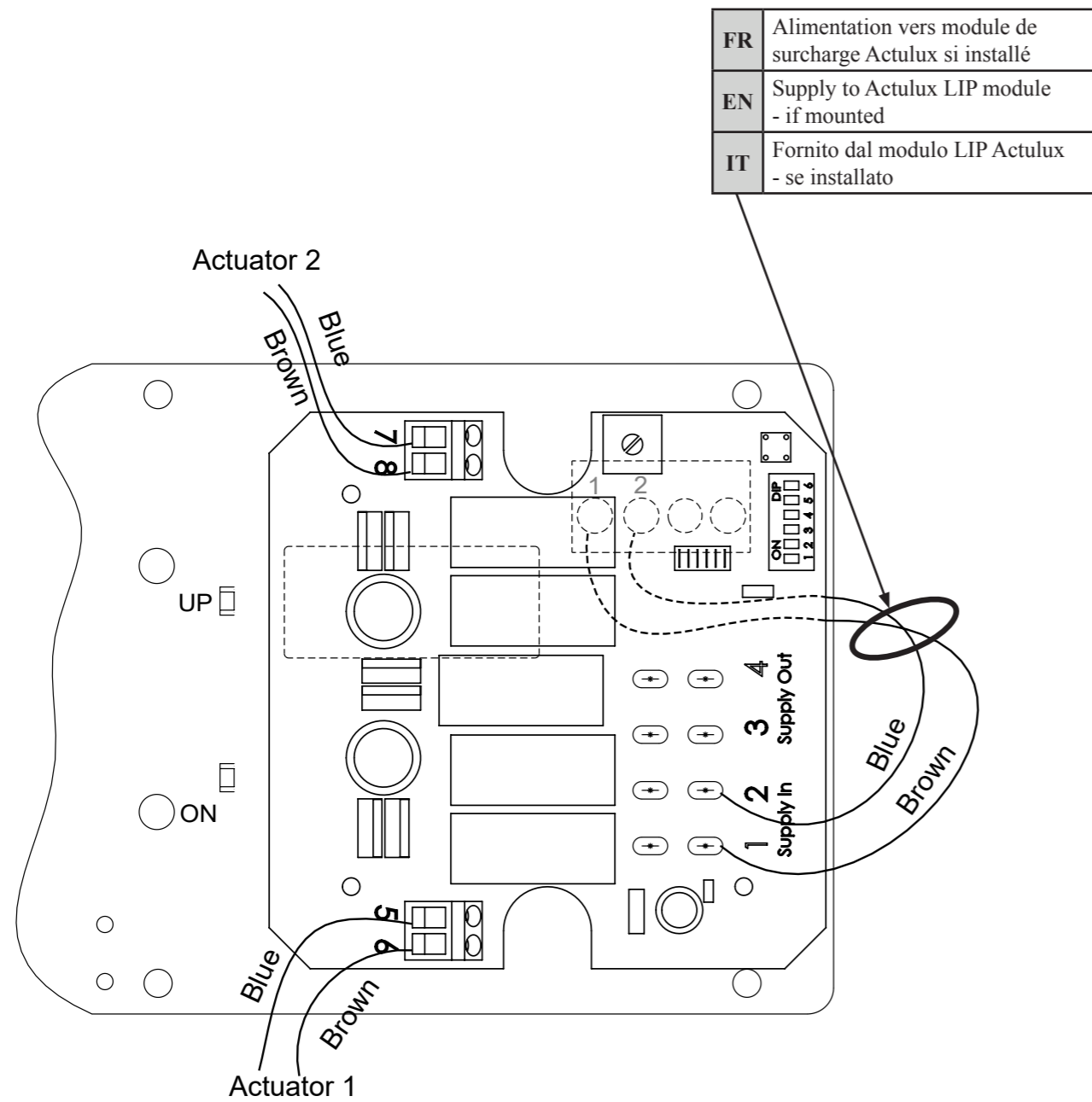
Remote or Comfort Switch controlled



	Descriptif (FR)	Description (EN)	Descrizione (IT)
RF CTRL (DIP 1)	ON	Télécommande ou commande aération	Remote or Comfort Switch controlled
	OFF	Pilotage par secteur 230V	AC Supply Controlled
PulsMode (DIP 2)	ON	Il est possible d'appuyer 3 fois sur le bouton "ouverture", chaque impulsion déclenchant une phase d'ouverture de 6 secondes. Un appui prolongé sur « ouverture » équivaut à 3 x 6 secondes donc 18 secondes. Une impulsion ou maintenu sur "fermeture" ferme complètement l'appareil- Le temps de fermeture est de 36 secondes.	It is possible to press the "up" button 3 times, which each gives 6 seconds of opening time - after that nothing happens - Continuous "up" signal gives 3x6 sec.=18 sec. - One press on "down" closes the actuator completely for a period which is 18 sec. longer than the complete opening time - In order to avoid "actuator pumping" max. 3 successive closing attempts will be allowed.
	OFF	Une action maintenue sur le bouton poussoir « ouverture » ou « fermeture » entraîne un ordre à la sortie de télécommande	Constant mode active. As long as "up" or "down" signal are given, the actuators are running
INV Alarm (DIP 3)	ON	Alarme lorsqu'il y a rupture de tension	Alarm when no voltage
	OFF	Alarme en mode émission	Alarm when voltage applied
Toggle (DIP 4)	ON	Basculer la sortie	Toggle output
	OFF	Fonction normale	Normal function

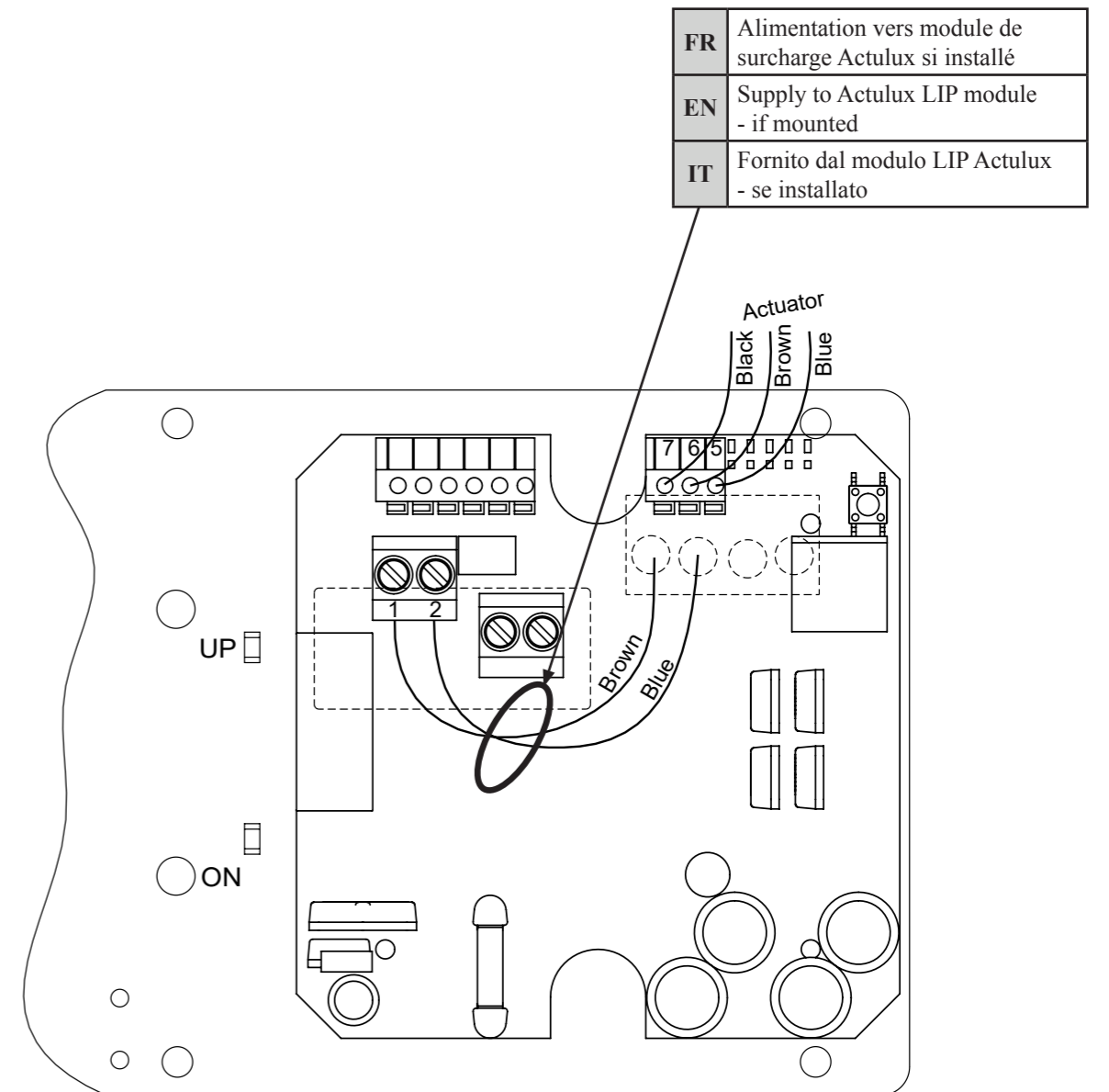
Descriptif (FR)	Description (EN)	Descrizione (IT)
Terre	Earth	Terra
Phase	Phase	Fase
Neutre	Neutral	Neutro
Fermeture	Down	Chiude
Ouverture	Up	Apri
Bleu	Blue	Blu
Marron	Brown	Marrone
Télécommande	Remote control	Controllo remoto
Sonde pluie et vent	Wind- and Rain Sensor	Sensore vento/pioggia
Commande aération	Comfort Switch	Pulsante comfort
Montage	Mounting	Installazione

LIP 6



Descriptif (FR)	Description (EN)	Descrizione (IT)
Bleu	Blue	Blu
Marron	Brown	Marrone
Alimentation	Supply	Alimentazione

LIP 7



Descriptif (FR)	Description (EN)	Descrizione (IT)
Bleu	Blue	Blu
Marron	Brown	Marrone
Noir	Black	Nero
OFF = Aucune résistance 27kΩ pour surveillance de ligne	OFF = No 27kΩ for line detection	OFF = Nessuna resistenza 27kΩ per monitoraggio linea
ON = Résistance de 27kΩ pour la surveillance de ligne	ON = 27kΩ for line detection at supply entrance	ON = Resistenza da 27kΩ per monitoraggio linea con alimentazione
Fermeture	Down	Chiude
Ouverture	Up	Apri

Caratteristiche Tecniche		FR	
Alimentation: 230VAC – max 1,5A		Sortie: 24VDC	
Max. temps de fonctionnement 120 sec. Cycle de service 10% 2 min. /18 min.			
Indice de protection: IP66		Température d'utilisation: -15°C - +40°C	
Dimensions: (L x B x H) 180 x 110 x 62mm		Poids: 580g	
Conformité:		EN12101-2 Annex G	
Directive Basse Tension:		2014/35/EU EN 61558-1:2006 (2nd edition), EN 61558-2-6, EN 61558-2-16 and EN 60335-1:2012 (4th edition)	
Directive CEM:		(2014/30/EU), EN50130-4:2011	
		Courant d'appel	Courant de fuite
Article: #121370	3A/65W	5A/230VAC	<2mA/240VAC
Article: #121380	4A/80W	5A/230VAC	<2mA/240VAC
Article: #121390	6A/150W	5A/230VAC	<2mA/240VAC
Article: #121360	8A/200W	5A/230VAC	<0.75mA/240VAC

Technical specifications		EN	
Power supply: 230VAC – max 1,5A		Output: 24VDC	
Max. operation time 120 sec. Duty cycle 10% 2 min. /18 min.			
IP class: IP66		Operating temperature: -15°C - +40°C	
Box size: (L x B x H) 180 x 110 x 62mm		Weight: 580g	
Meets requirements:		EN12101-2 Annex G	
Low Voltage Directive:		2014/35/EU EN 61558-1:2006 (2nd edition), EN 61558-2-6, EN 61558-2-16 and EN 60335-1:2012 (4th edition)	
EMC Directive:		(2014/30/EU), EN50130-4:2011	
		Inrush Current (cold start)	Leakage Current
Product no.: #121370	3A/65W	5A/230VAC	<2mA/240VAC
Product no.: #121380	4A/80W	5A/230VAC	<2mA/240VAC
Product no.: #121390	6A/150W	5A/230VAC	<2mA/240VAC
Product no.: #121360	8A/200W	5A/230VAC	<0.75mA/240VAC

Caratteristiche tecniche		IT	
Alimentazione: 230VAC - max. 1,5A		Ausgangsspannung: 24VDC	
Massimo tempo di utilizzo: 120 s, Utilizzo: 10% 2 min. /18 min.			
Classe di protezione: IP66		Temperature di utilizzo: -15°C - +40°C	
Dimensioni scatola: (L x L x H): 180 x 110 x 62mm		Peso: 580g	
Conforme a:		EN12101-2 allegato G	
Normative bassa tensione:		2014/35/EU EN 61558-1:2006 (2nd edition), EN 61558-2-6, EN 61558-2-16 and EN 60335-1:2012 (4th edition)	
Direttiva EMC:		(2014/30/EU), EN50130-4:2011	
		Corrente di spunto	Dispersione
Produkt-Nr.: #121370	3A/65W	5A/230VAC	<2mA/240VAC
Produkt-Nr.: #121380	4A/80W	5A/230VAC	<2mA/240VAC
Produkt-Nr.: #121390	6A/150W	5A/230VAC	<2mA/240VAC
Produkt-Nr.: #121360	8A/200W	5A/230VAC	<0.75mA/240VAC